



## Building a Weather-Ready Nation

# Kansas And Missouri Severe Weather Preparedness Week

## March 3rd - 7th, 2025

[Tornadoes](#) | [Severe Thunderstorms](#) | [Lightning](#) | [Flooding](#)

Join the NWS and [Missouri State Emergency Management Agency](#) and [Kansas Division of Emergency Management](#) on Facebook and Twitter during Severe Weather Preparedness Week, March 3rd - 7th, 2024, to promote severe weather preparedness!

### Monday

Having a Plan



### Tuesday

Lightning Safety



### Wednesday

Tornadoes



### Thursday

Wind & Hail



### Friday

Flooding



## Missouri and Kansas Statewide Severe Weather Tornado Drill - **March 5th, 2025 at 11 AM CST**

Residents should treat the drill as if it were an actual Tornado Warning. The purpose of the drill is to test everyone's readiness for life-threatening severe weather events such as tornadoes, flash floods, and damaging winds. Local officials are encouraged sound warning sirens to initiate the drill.

The National Weather Service will issue a Routine Weekly Test (RWT) to NOAA Weather Radios to initiate the drill.

[NWS Kansas City/Pleasant Hill](#) will advertise the tornado drill on our [Twitter](#) and [Facebook](#) accounts. Local warning sirens and the [NOAA All-Hazards Weather Radio](#) will be activated to signal the start of the drill.

The NWS encourages everyone to consider participating by simply sheltering-in-place or discussing sheltering options/plans among co-workers/family members.

The purpose of the drill is to test everyone's readiness for life-threatening severe weather events such as tornadoes, flash floods, and damaging winds. Local officials may sound warning sirens to initiate the drill.



# Join Us In Becoming a Weather Ready Nation!

The [Weather Ready Nation](#) is about building community resilience in the face of increasing vulnerability from extreme weather event. Recent tornadoes, floods, drought, etc. demonstrate the need to be prepared. Are you weather ready? Here are resources to help you be prepared before disaster strikes.

[NWS Severe Storm Safety](#) | [Missouri Storm Aware](#) | [Kansas Awareness Info](#) | [Ready.gov](#) | [SEMA](#)

## Severe Weather Safety Tip Sheets (PDF's for download & print)

[Tornado Safety](#) | [Flood Safety](#) | [Lightning](#) | [Storm Safety & Preparedness](#)



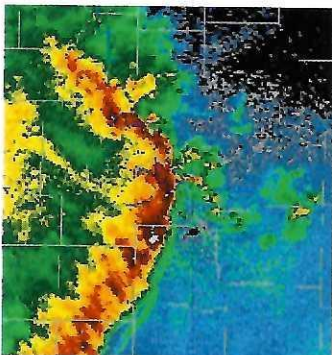
## Tornado Information & Safety

Deadly and devastating tornadoes have demonstrated their awful power in Missouri and Kansas.

Now is the time to develop a [tornado safety plan](#) before a tornado strikes. Knowing what to do before a tornado occurs is essential to protect lives.



## Severe Thunderstorm Information & Safety



Severe thunderstorms produce a variety of weather hazards including tornadoes, large hail, damaging straight line winds, flooding, and lightning.

Now is the time to review [Severe Weather Safety Information](#).

Severe thunderstorms producing damaging winds in excess of 60 mph and large hail can be a threat to life and property. Damaging straight line winds are much more common than tornadoes and can be just as deadly.

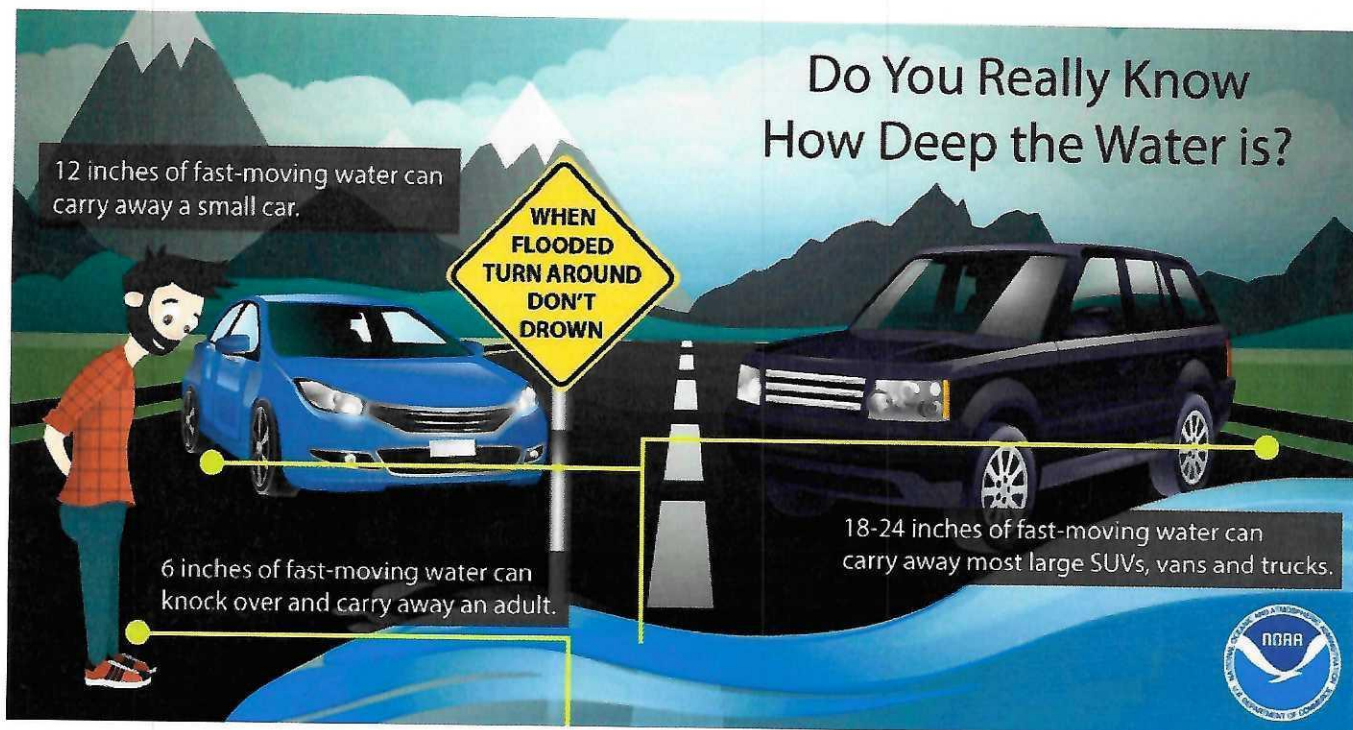
Those caught outdoors during a severe thunderstorm are particularly vulnerable. Boaters and campers should be especially alert to the potential of severe storms. High winds associated with severe thunderstorms can strike suddenly. Winds in excess of 60 mph can easily capsize boats and put campers at risk due to falling trees.

## Flood Information & Safety

Typically, flooding results in more weather related fatalities than any other thunderstorm related hazard. Why? Many of the deaths occur in automobiles as they are swept downstream. Of these drownings, many are preventable, but too many people continue to drive across a flooded road.

For more information go to the [Flood Safety](#) page.





For each foot the water rises up the side of the car, the car displaces 1500 lbs. of water. In effect, the automobile weighs 1500 lbs. less for each foot the water rises. Two feet of water will carry away most automobiles!!!

## Lightning Information & Safety

At any given moment, there are 1,800 thunderstorms in progress somewhere on Earth. This amounts to 16 million storms a year! In the United States, there are an estimated 25 million cloud-to-ground lightning flashes each year. While lightning can be fascinating to watch, it is also extremely dangerous.

Tragedies in school sponsored athletics are unfortunately a growing trend as well. When thunderstorms threaten, coaches and officials must not let the desire to start or finish an athletic activity or event cloud their judgment when the safety of participants and spectators is in jeopardy.

For more lightning facts and safety information go to the [NWS Lightning Awareness](#) page.



## Social Media

Several NWS offices serve the regions of Kansas and Missouri. Below are links to their web pages and social media.

<a href="#">NWS Kansas City</a>	<a href="#">NWS Springfield</a>	<a href="#">NWS St. Louis</a>	<a href="#">NWS Topeka</a>	<a href="#">NWS Wichita</a>	<a href="#">NWS Paducah</a>	<a href="#">NWS Davenport</a>
 	 	 	 	 	 	 

**One More Day of Bitter Cold Temperatures** February 21, 2025 4:51 AM

**Temperatures start warming this weekend**

**Key Messages:**

**Today: Cold temperatures continue**

- Temperatures start today below zero.
- Wind chills will range from 0 to -10 this morning.
- Highs warming into the 20s this afternoon.
- Lowest lows possible this afternoon south of I-70.

**Next Week: Much milder temperatures**

- Highs ascend to the upper 30s, 40s and lower 50s by Sunday.
- Temperatures look to ascend toward 60 F for the work week.
- Next chance for rain looks to be Wednesday/Thursday.

**Low Temperatures: Puffy Morning**

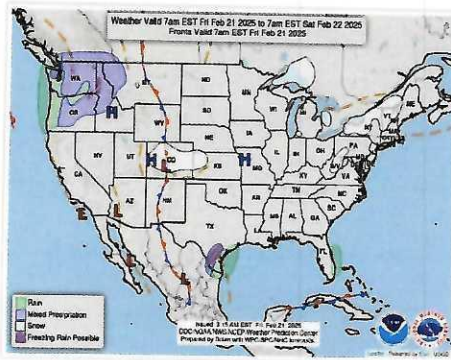
**Wind Chill: Risky Morning**

**What is Today?**

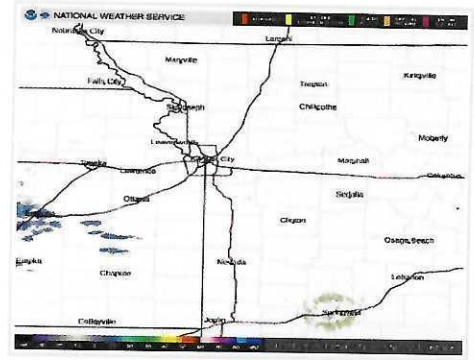
23	35	49	57
Friday	Saturday	Sunday	Monday

National Weather Service  
Kansas City, MO

Weather Story



Weather Map



Local Radar